





# Kestrel Close, Kingsnorth, Ashford

Guide Price £475,000 Freehold

4 bedroom detached house for sale

## Description

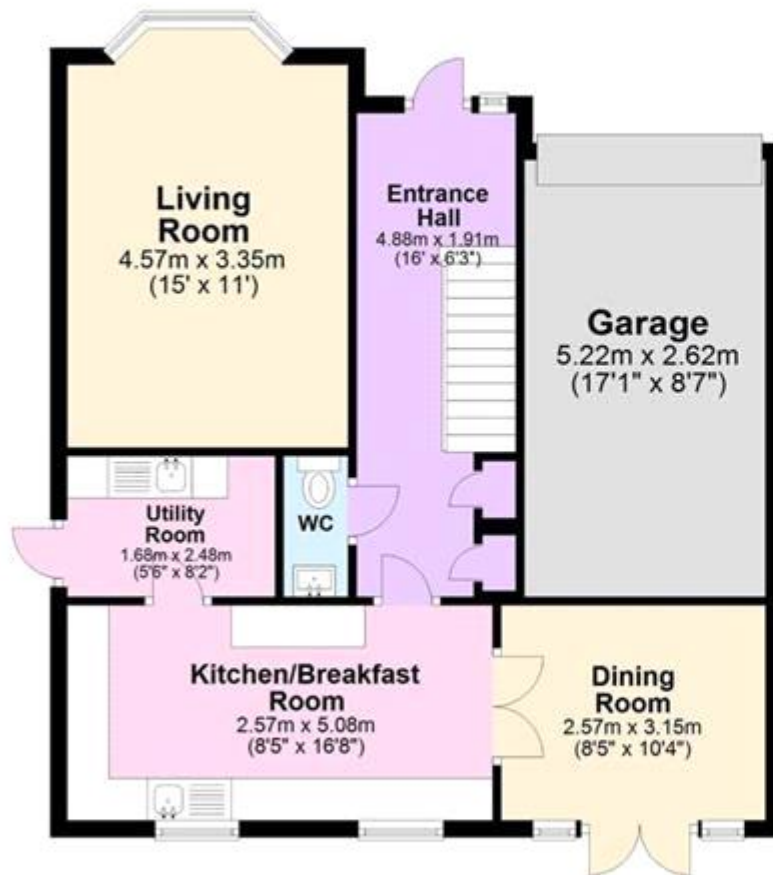
This Four Bedroom Detached House is ideally located in a quiet Cul-De-Sac in the popular location of Park Farm in Kingsnorth. This location is ideal for families, there are several good schools nearby as well as a large Tesco superstore, there is also easy access to the town centre and railway station. As soon as you pull up outside this property, you are sure to be impressed, the house occupies a good size plot and has a garage and driveway parking for 2/3 cars. When you enter the property, you will feel instantly at home, there is a large entrance hallway with the main living room leading off to the right hand side, this room is bay fronted and is full of sunlight, a great place to relax in front of the television after a busy day. The modern kitchen/breakfast room is at the rear of the house overlooking the garden, there is a great range of fitted units, integrated appliances and a range cooker, there is a good sized utility room leading off here with an additional sink and extra cupboard space. There is also a dining room to the rear of the house with French doors leading out onto the patio and a useful downstairs WC. Upstairs the property has four good sized bedrooms, the master has an ensuite and fitted wardrobes and the second bedroom is absolutely huge with a fitted eaves cupboard. There is also a well fitted modern family bathroom with a shower over the bath. Outside, the house has a good sized rear garden with a patio, lawn and decking, there is also side access and a fenced surround. VIEWING IS HIGHLY RECOMMENDED



Council Tax Band: F  
Tenure: Freehold  
Parking options: Off Street  
Garden details: Private Garden

**Tenure**  
Freehold

Ground Floor



First Floor





Energy Efficiency Rating		
	Current	Potential
Very energy efficient - lower running costs		
(92-100) <b>A</b>		
(81-91) <b>B</b>		<b>83</b>
(69-80) <b>C</b>	<b>68</b>	
(55-68) <b>D</b>		
(39-54) <b>E</b>		
(21-38) <b>F</b>		
(1-20) <b>G</b>		

Viewing by appointment only  
 Oatley & O'Connor Ltd - Head Office  
 Oatley & O'Connor, 27 Castle Street, Canterbury, Kent CT1 2PX  
 Tel: 01227 903156 Email: [james@oatleyandoconnor.com](mailto:james@oatleyandoconnor.com) Website:  
<https://oatleyandoconnor.com/>

