



Central Boulevard, Aylesham, Canterbury

Guide Price £290,000 Freehold

3 bedroom semi-detached house for sale

Description

This Three Bedroom Semi-Detached Modern Family Home is presented in great condition throughout. Ideally located in Aylesham Village and perfectly located for local schools, the property is within easy reach of the local railway station and bus services. This house has a lovely sunny living space which is a perfect place to congregate and chill out, the large kitchen/diner at the rear of the property has a full range of fitted units and some integrated appliances, there is also loads of room for dining and a good sized table. This property has three toilets, including a downstairs cloakroom, family bathroom and an En-Suite, there are also three good sized bedrooms. Outside the house has a sunny lawned garden, complete with a patio and there is rear access to the car barn and parking area. VIEWING HIGHLY RECOMMENDED

Tenure: Freehold

Parking options: Off Street

Garden details: Private Garden

Tenure

Freehold

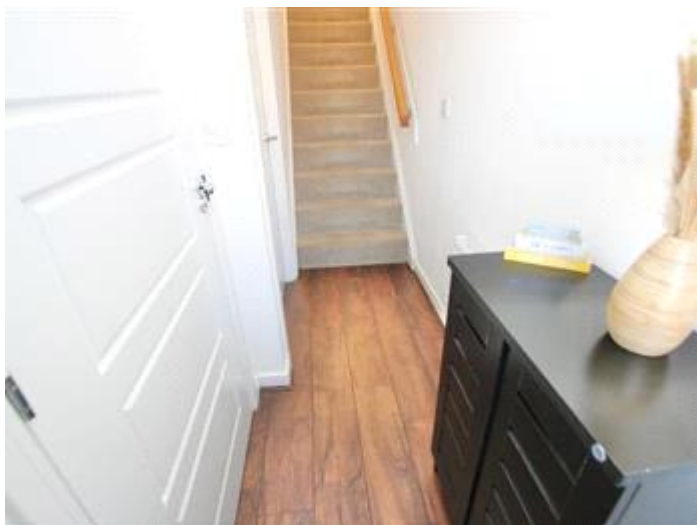
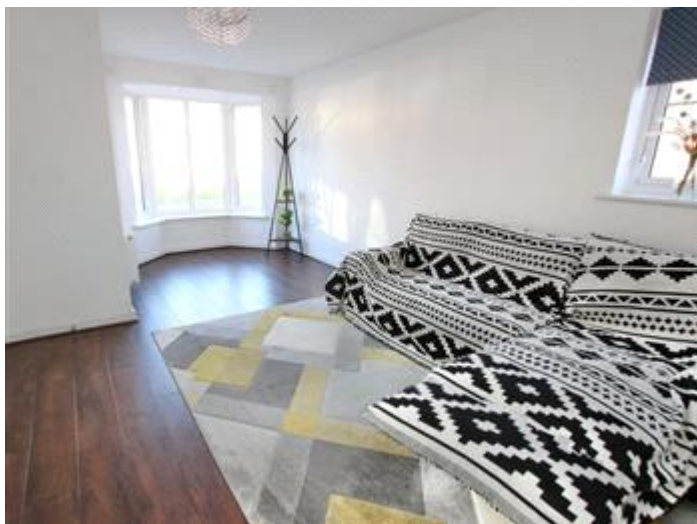


Ground Floor



First Floor





Viewing by appointment only
Oatley & O'Connor Ltd - Head Office
Oatley & O'Connor, 27 Castle Street, Canterbury, Kent CT1 2PX
Tel: 01227 903156 Email: james@oatleyandoconnor.com Website:
<https://oatleyandoconnor.com/>

